

## THE WINKLE OF THE HARBOUR

### 1. RULES

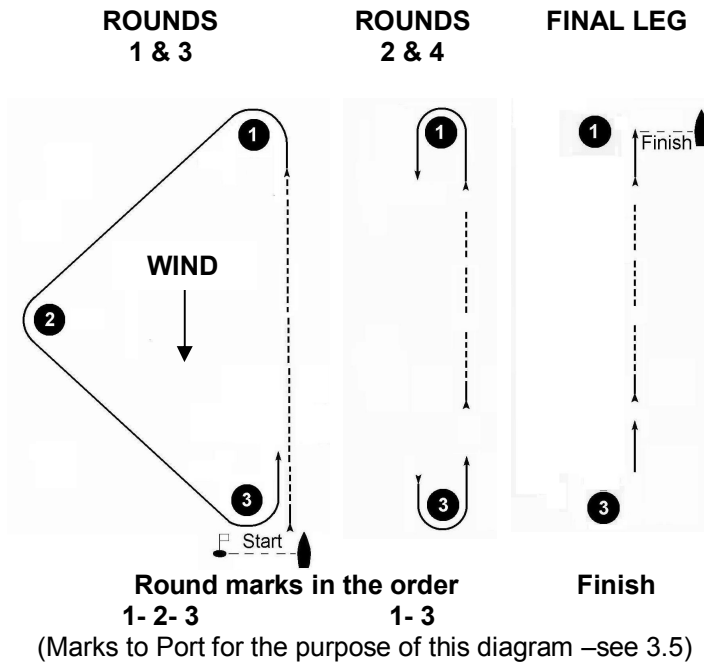
- 1.1. The 'rules' as defined in the Racing Rules of Sailing shall apply.
- 1.2. A change to these Sailing Instructions or Notice of Race shall be posted on the Club Notice board in the club foyer one hour before the start.

### 2. RACE TIME AND CLASS SIGNAL

- 2.1 The time of warning signal shall be **11.55**
- 2.2 The Class Flag shall be Numeral Pendant 9.

### 3. COURSES

- 3.1 Courses shall consist of a number of rounds (see 3.2) followed by a final leg to the finish line.
- 3.2 **The number of rounds** to be sailed shall be displayed on a board on the committee boat.
- 3.3 Laid orange marks shall be used.
- 3.4 **Course configuration**



- 3.5 Marks 1, 2, & 3 shall be rounded to PORT when a RED flag, and STARBOARD when a GREEN flag, is flown from the committee boat.

## SAILING INSTRUCTIONS 2011

### 4. SHORTENED COURSE (amending RRS 32)

- 4.1 Boats shall round the mark at which the course is shortened and sail to the finish line, except
- 4.1.1 when a blue flag is flown below Code Flag S, boats shall finish at the mark.

### 5. STARTING AND FINISHING

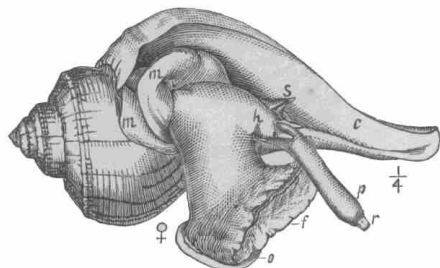
- 5.1 **The start line** shall be between the mast of the committee boat and a dan buoy, each flying an orange flag.
- 5.2 **The finish line** shall be between the mast of the committee boat flying an orange flag and mark 1.

### 6. PROTESTS

Protests shall be lodged within 30 minutes of the protesting boat's finish.

# MENGEHAM RYTHE SAILING CLUB

## The Winkle of the Harbour



Winkle, p. 2340.

## NOTICE OF RACE

Tuesday 27<sup>th</sup> December 2011

12.00 Start in Chichester Harbour area of Pilsey Sands

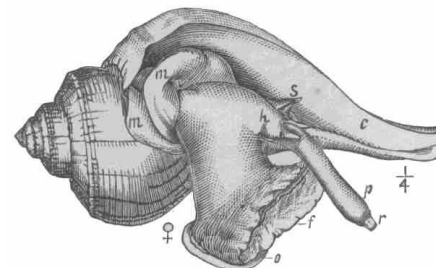
**High Tide: 12.55**

**Ht: 4.80m**

- 1. ORGANISING AUTHORITY & RULES**
  - 1.1 The Organising Authority is MRSC ("the Club") and this term includes its officers, the sailing committee, the race officers and assistants, the patrol boat crews and any other person involved in running the event.
  - 1.2 The 'rules' as defined in the Racing Rules of Sailing (RRS) shall apply.
- 2. CONDITIONS OF ENTRY**
  - 2.1 Competitors are required to agree to be bound by the 'rules', and accept that they participate at their own risk (RRS 4) thereby implying that their boat is fit, and its crew competent, to sail in the conditions likely to be encountered, and that, notwithstanding the provision of patrol boats, the Club has no liability for personal injury or material damage sustained in conjunction with or prior to, during, or after racing unless caused by its negligence. By racing competitors acknowledge such agreement and acceptance.
  - 2.2 The parent or guardian of any helm under 18 must complete an entry form before the race.
  - 2.3 All boats shall be insured for at least £2m against third party claims.
  - 2.4 Open to boats with PY of 1385 & below (no multi-hulls allowed).
- 3. HANDICAPS:** local MRSC handicaps based on PY numbers shall apply.
- 4. ENTRIES**
  - 4.1 Entry fees: £5; (Donated to RNLI).

# MENGEHAM RYTHE SAILING CLUB

## The Winkle of the Harbour



Winkle, p. 2340.

Tuesday 27<sup>th</sup> December 2011

**RETIREMENTS SHOULD BE REPORTED TO A PATROL BOAT OR THE RACE OFFICE AS SOON AS POSSIBLE**

---

**Commodore:** Bill Rowlands

**Principal Race Officer:** Graeme Macdonald

---

**Honorary Membership is extended to competitors and their families for the day.**

**Refreshments will be provided for competitors after racing.**