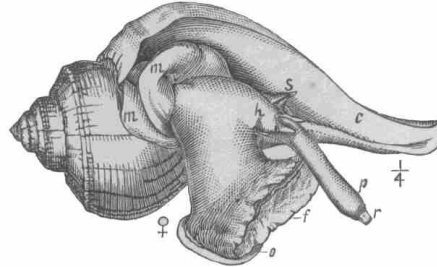


Mengeham Rythe Sailing Club

Marine Walk, Hayling Island, Hants PO11 9PG Tel 023 9246 3337

The Winkle of the Harbour



Winkle, p. 2340.

NOTICE OF RACE

Tuesday 27th December 2011

12.00 Start in Chichester Harbour area of Pilsey Sands

High Tide: 12.55

Ht: 4.80m

1. ORGANISING AUTHORITY & RULES

- 1.1 The Organising Authority is MRSC ("the Club") and this term includes its officers, the sailing committee, the race officers and assistants, the patrol boat crews and any other person involved in running the event.
- 1.2 The 'rules' as defined in the Racing Rules of Sailing (RRS) shall apply.

2. CONDITIONS OF ENTRY

- 2.1 Competitors are required to agree to be bound by the 'rules', and accept that they participate at their own risk (RRS 4) thereby implying that their boat is fit, and its crew competent, to sail in the conditions likely to be encountered, and that, notwithstanding the provision of patrol boats, the Club has no liability for personal injury or material damage sustained in conjunction with or prior to, during, or after racing unless caused by its negligence. By racing competitors acknowledge such agreement and acceptance.
- 2.2 The parent or guardian of any helm under 18 must complete an entry form before the race.
- 2.3 All boats shall be insured for at least £2m against third party claims.
- 2.4 Open to boats with PY of 1385 & below (no multi-hulls allowed).

3. HANDICAPS: local MRSC handicaps based on PY numbers shall apply.

4. ENTRIES

- 4.1 Entry fees: £5; (Donated to RNLI).
- 4.2 Entries on the day at the Club from 10.00am, from HISC and on the water prior to the start.

5. SAILING INSTRUCTIONS will be available upon entry and can be viewed on www.mengeham.org.uk

Honorary Membership is extended to competitors and their families for the day.

Refreshments will be provided for competitors after racing.

Further information: sailingsec@mengeham.org.uk